



View Coega
Corporate Video



View Coega
Energy Brochure

20 22

INVESTORS

EXTERNAL PROGRAMMES

COEGA INVESTORS & CLIENTS PORTFOLIO

www.coega.co.za



▪ right **PLACE** ▪ right **TIME** ▪ right **CHOICE**



CONTENTS

CDC

AREA PROFILE

PORT OF NGQURA

SEZ INVESTMENT SERVICES

ZONE I

1. BAIC SA
3. Vector Logistics
4. National Ship Chandlers
5. Famous Brands
6. Digistics
7. PE Cold Storage
8. Isuzu SA
9. APM Terminals
10. The Courier Guy
11. Lactalis
12. DynaFoam Converters
13. MSC SEZ
14. Absolute Wind
15. ALE
16. DHL

ZONE 2

17. FAW
18. Hella
19. CFR/ZacPak

ZONE 3

20. Corro Master
21. Air Products
22. Afrox
23. Dynamic Commodities
24. Dairy Group

MULTI USER FACILITY

25. Himoina
26. OLM Engineering
27. ChemChamp
28. Mzantsi Commercial Solutions
29. TransMerch Africa

ZONE 4

30. WNS
31. Discovery

ZONE 5

32. Sanitech
33. Cemza
34. Kenako Concrete
35. Bosun Brick

ZONE 6

36. Coega Steels

ZONE 7

37. Cerebos

ZONE 11

38. Electrawinds

ZONE 13

39. Dedisa Peaking Power Plant

NMBLP

44. Grupo Antolin
45. Benteler
46. Faurecia
47. Schnellecke
48. Q-Plas
49. REHAU
50. ITPSA
51. MICB
52. MSC SA



NON-SEZ PROJECT MANAGEMENT SERVICES

SEZ DEVELOPMENT

55. TASEZ

DOH

- 58. Cecilia Makiwane Hospital
- 59. Frere Hospital
- 61. Frontier Hospital
- 62. Khotsong Hospital
- 63. St Lucy's Hospital
- 64. Lusikisiki Hospital
- 65. Jose Pearson TB Hospital
- 66. Marjorie Parish TB Hospital
- 67. Zithulele District Hospital
- 68. Bambisana District Hospital



DOE

- 69. Anton Lembede Mathematics, Sciences & Technology Academy
- 71. Bedford Primary School
- 72. AV Bukani Primary School
- 73. Manqulo J.S.S
- 74. Sophumelela JP School



OTHER NON-SEZ SERVICES

- 77. Bluewater Bay Sunrise Hotel
- 80. Vulindlela Accommodation and Conference Centre
- 81. South African Marine Fuels (SAMF)
- 82. Coega Marine Services
- 83. Small Business Finance Solutions (SBFS)
- 84. Coega Africa Programme (CAP)





DEVELOPER & OPERATOR OF THE LEADING SEZ IN AFRICA

Coega Development Corporation Business Centre



About the Coega Development Corporation

The Coega Development Corporation (CDC) is headquartered in the City of Gqeberha, Nelson Mandela Bay Municipality, South Africa, with a strategic operational footprint in South Africa and beyond the borders on the African continent. The CDC's vision is to be the leading catalyst for the championing of socio-economic development. This it seeks to achieve through the development and operation of the 9 003-hectare Coega Special Economic Zone (SEZ), a transshipment hub and a leading investment destination in Africa, providing highly skilled competence and capacity for the execution of complex infrastructure and related projects throughout South Africa and selected markets on the African continent, and advisory on the development of industrialisation and logistics zones. The CDC's advanced capabilities are successful enablers in economic zone development and management, real assets management, infrastructure planning and development, technology integration while realising related socio-economic impact areas such as skills and SMME development. The foundational culture of the CDC's approach, backed by core values, is innovation and continuous improvement.

COEGA SEZ FOCUS SECTORS



Coega is pronounced 'koo-gha' with a guttural sound forming the last syllable. Coega would have originally come from the Damasqua word which means 'ground water'. The Damasqua were the original inhabitants of the bay and their language is part of the Khoekhoe language group.

COEGA OWNERSHIP



Coega puts the Sustainability Agenda at the forefront of driving Business Growth



The global sustainable development agenda embodied in the United Nations Sustainable Development Goals (SDGs) is affecting strategic decisions and operations of businesses around the world. These are complemented by the South African government's response following the signing of the Paris Agreement on climate change by the Minister of Environmental affairs in New York in 2016. The South African Presidency has setup a Presidential Climate Change Coordinating Commission (P4C) with effect from 17 December 2020, to coordinate and oversee the just transition towards a low-carbon, inclusive, climate change resilient economy and society working towards a net zero economy by 2050.

The CDC noted that the Presidency has also identified hyper-scaling of environmental, social, and governance investments to support social and green economy objectives as one of the five big frontier investments for South Africa. Therefore, as a company that is in a business of enabling investments, implementing infrastructure development solutions, and facilitating integration with other African countries through the African Continental Free Trade Area (AFTCTA), the CDC must integrate in its approach and align to this agenda. Important to this alignment is the ability to anticipate and develop solutions that respond to the global environment and the evolving needs of its investors and clients while ensuring innovation and continuous improvement. The CDC has also noted that global factors force companies to act, retain, regain, or sustain their competitive advantages for long-term survival, and the CDC is embarking on this sustainability agenda as an important journey to align itself. Furthermore, the King Code for Responsible Investing in South Africa (CRISA) formally encourages institutional investors to integrate sustainability issues, such as ESG, into their investment decisions. As a result, the CDC takes the ESG very seriously as it has a significant impact on investor sentiments and on our ability to grow the number and value of investors in the Coega Special Economic Zone. This booklet provides the current list of Investors and Clients. These stakeholders will certainly benefit from the CDC that is focused on the ESG.

Port development as enabler for SEZ growth

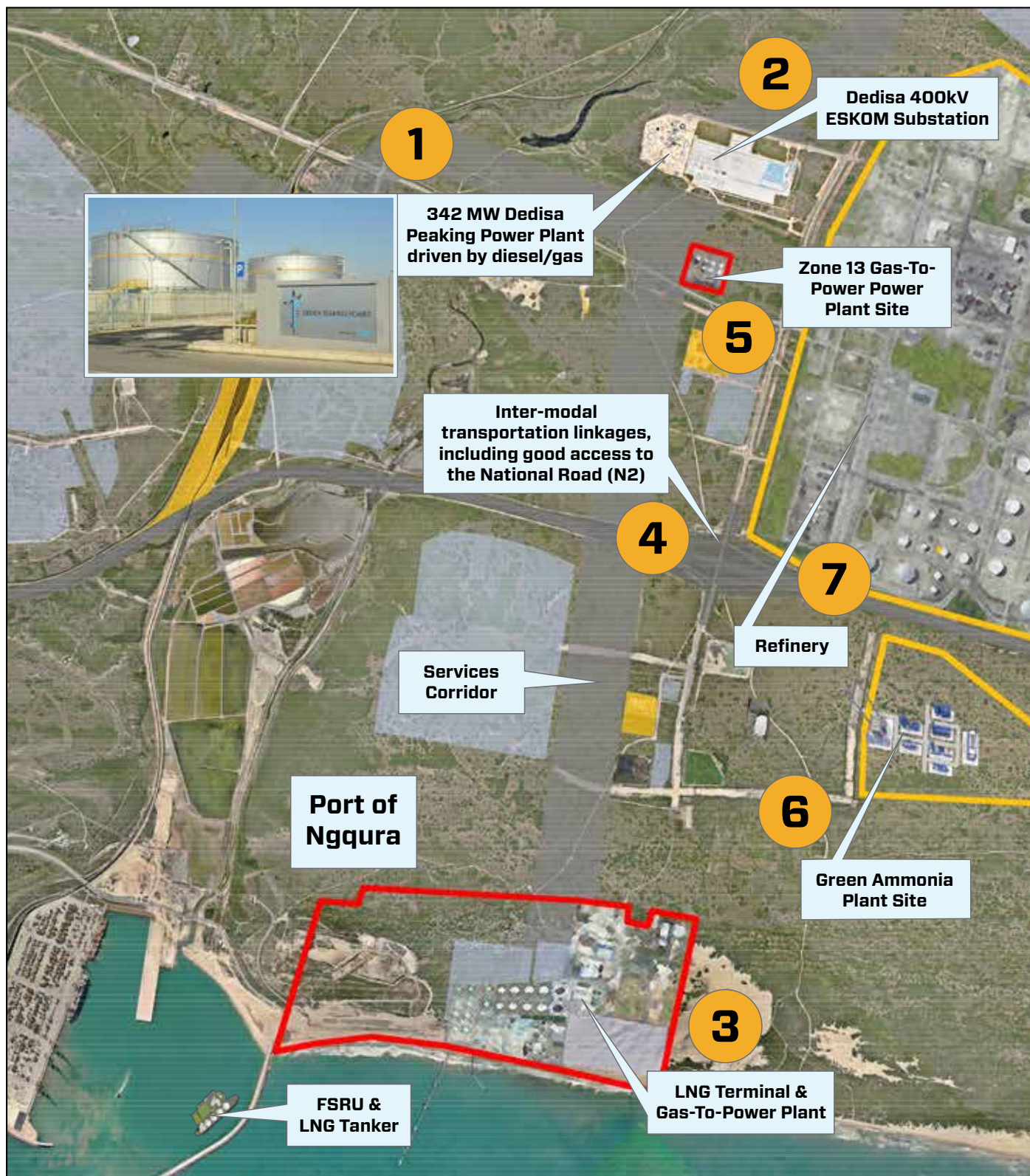
The Deepest water Port of Ngqura that is within the Coega Precinct has intentionally been planned to expand local and national economic, and social development and industrial synergies. The port and industrial area was designed for an integrated industrial eco-system. The first focus was on establishment of port and industrial area. Recently, sustainability objectives have been announced. The Coega SEZ & Port are designed for industrial synergy & sustainability. Different zones within the Coega SEZ are for dedicated industrial development that allows industrial synergy, i.e, automotive, logistics, metals, chemicals, maritime, agro-processing & aquaculture, services, energy, and trade solutions training and development. Examples for industrial synergy include seawater intake for water for aquaculture, water for cooling for gas energy generation, sea water supply for desalination plant being built at Coega, and by-products of salt and water which can be used in hydrogen production.

Catalytic SEZ Projects

Aquaculture Development Zone

Targeting abalone, marine and freshwater finfish, seaweed, aquaponics including farms, processing facilities, located in Zone 10 of the Coega SEZ.

Coega SEZ identified as the Gas Hub for the country.



1st LNG (1000MW) Hub in South Africa at the Coega SEZ.



View CDC Energy Sector Projects Interview Video

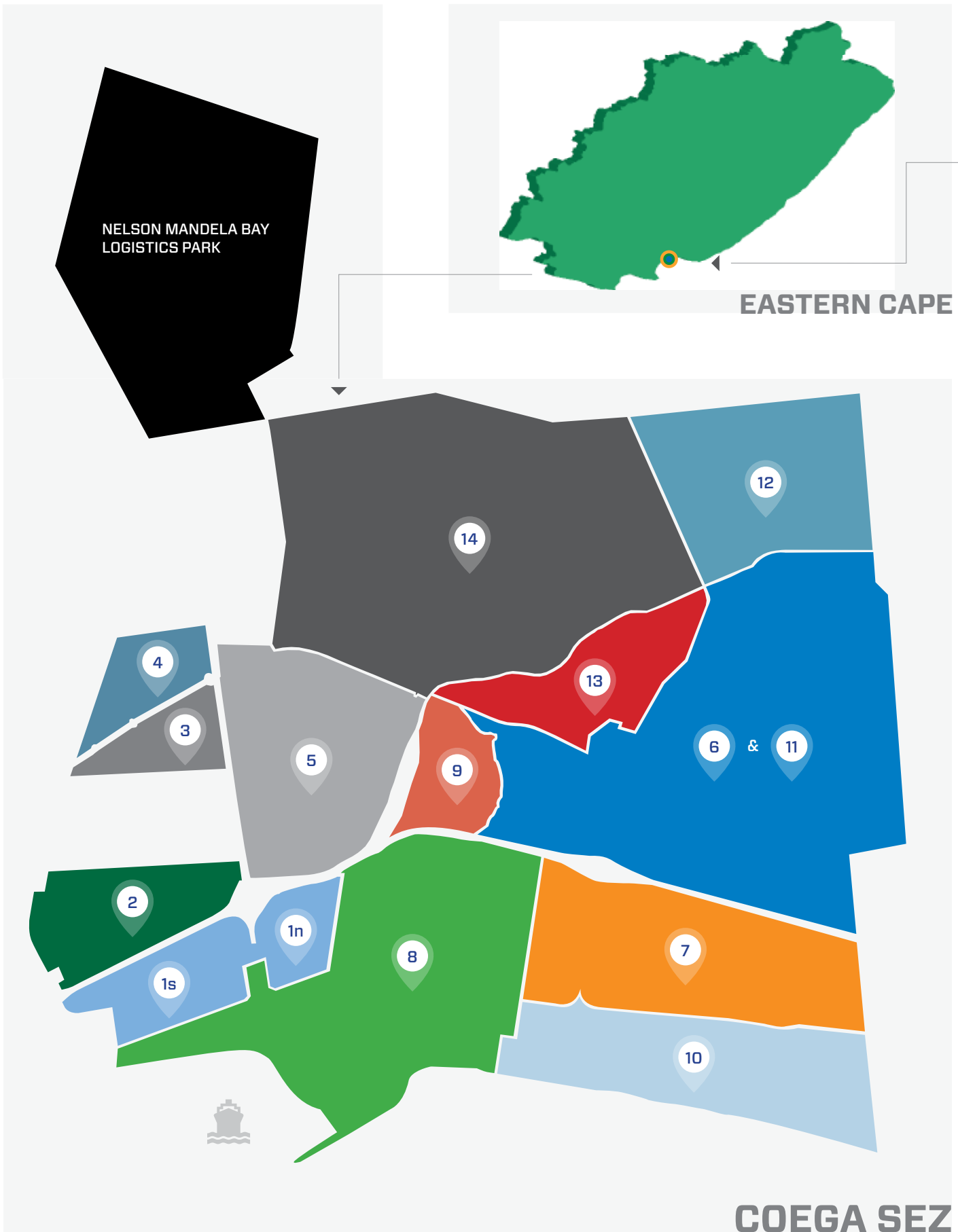


Mulilo Total Coega Power Station and Karpowership - Zone 13 and Port of Ngqura.



15ML per day Seawater Desalination Plant.

AREA PROFILE OF THE COEGA SEZ





SOUTH AFRICA

WORLD

	ZONE 1N	Commercial Cluster – Coega Business Centre		ZONE 7	Chemicals Cluster – Cerebos
	ZONE 1S	Logistics Cluster – Digistics, Famous Brands, APM Terminals, PE Cold Storage, ISUZU, Vector Logistics, National Ship Chandlers, BAIC SA, Lactalis/Parmalat, The Courier Guy		ZONE 8	Port Area
	ZONE 2	Automotive Cluster – FAW, CFR/Zacpack Logistics, Hella		ZONE 9	Materials Handling Cluster
	ZONE 3	General Industries Cluster – Afrox, Air Products, Dynamic Commodities, Dairy Group, Himoina, OLM Engineering, Corro Master, MzantsiCS Foods, ChemChamp Africa		ZONE 10	Mariculture & Aquaculture Cluster
	ZONE 4	Training & Academic Cluster – Human Capital Solutions, Skills Development Centre, BPO Park: Discovery, SBFS, WNS		ZONE 12	Advanced Manufacturing Cluster
	ZONE 5	Metallurgical Cluster – Bosun Brick, Kenako Concrete, Sanitech, Cemza		ZONE 13	Energy Cluster – DEDISA Peaking Power Plant
	ZONE 6 & 11	Metals & Petrochemical Cluster – Coega Steels, Electrawinds		ZONE 14	Advanced Manufacturing: Aeronautical and Aerospace Cluster
				NMBLP	Nelson Mandela Bay Logistics Park – MSC, Grupo Antolin, Benteler, Rehau, Faurecia, ITPSA, Q-Plas, MICB, Schnellecke

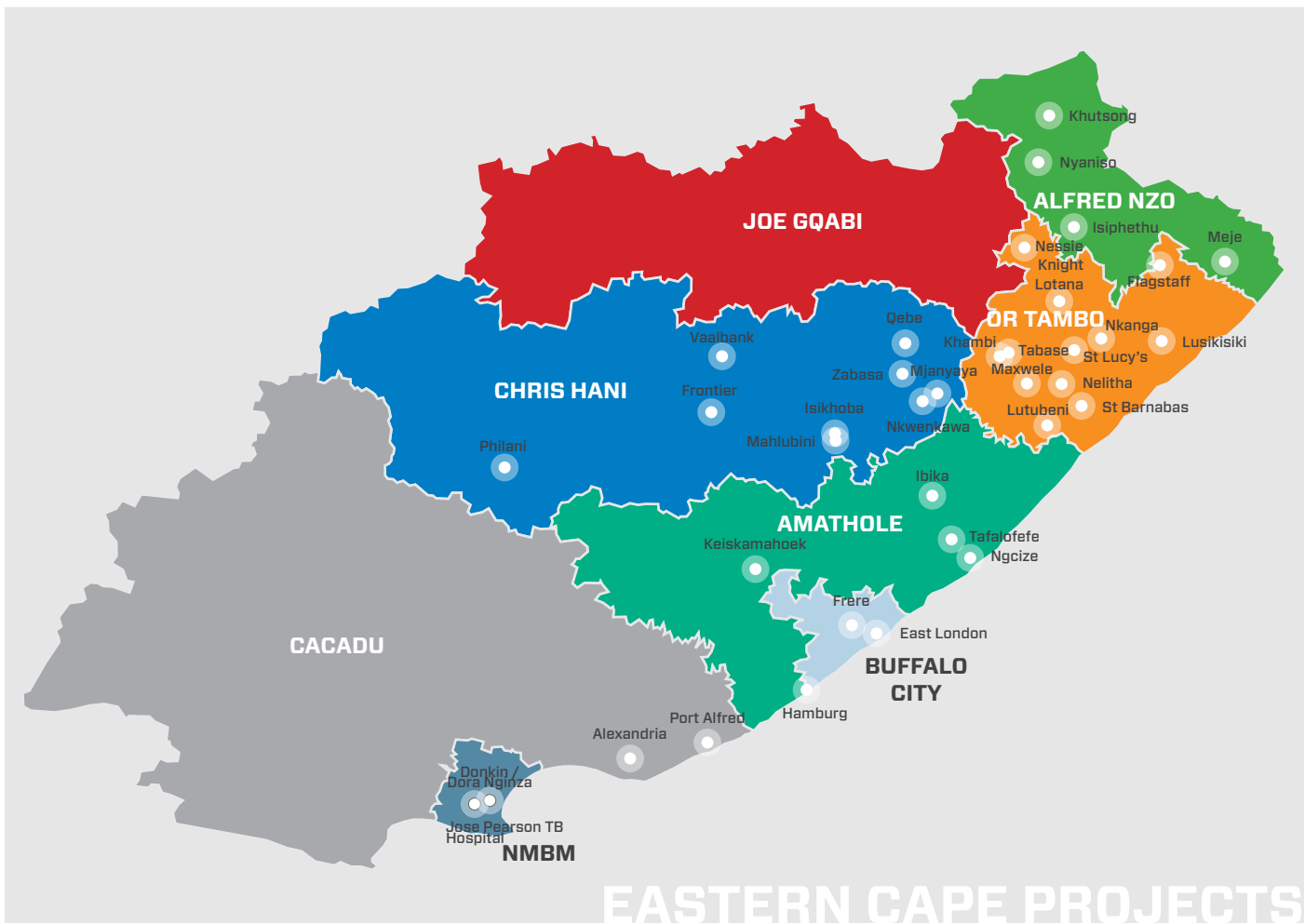
COEGA SEZ CLUSTER ZONES



View The Coega SEZ Virtual Tour

AREA PROFILE EXTERNAL SERVICES (NON-SEZ)





PORT OF NGQURA

About Port of Ngqura

Statistics & Operations

Nelson Mandel Bay, South Africa

- World-class deep-water container transshipment hub for sub-Saharan Africa.
- Over 6 million tons of cargo in 2016 (over 400 vessel calls) with 30-years forecast predicting up to 110 million tons of cargo per year.
- Strategically positioned in the heart of the Coega SEZ, the port continues to expand its service offerings to accommodate dry bulk, break-bulk, liquid bulk and project cargo.
- 24-hour working port.
- Number of employees: 242

Land & Water Area

- Number of berths: (4), Dry Bulk (2) Liquid Bulk (1)
- Entrance channel: 300m wide
- Turning circle: 600m diameter
- Total surface area: 83.5 ha
- Total rail tracks: 2.5km with four sets for staging and one for locomotive return
- Port connection leads to rail, road and air connection
- Port land: 1 307.7736 ha

Features: Entrance & Approach Channel

- Depth - 18m Chart Datum (port)
 - Western basin depth (D series berths used for containers) - 16m Chart Datum (port). Maximum permissible draft 15.5m.
 - Eastern basin depth (B100) - 18m Chart Datum (port). Maximum permissible draft 17.5m.

Anchorage

- 2 x Anchorage areas
- Capacity for approximately 50 vessels simultaneously
- Spill response capability

Marine Services

- VTS integrated with AIS, IPOSS and latest radar technology
- Port pilotage compulsory
- Spill response capability





Deep-water Port of Ngqura, strategically situated adjacent to the Coega SEZ

<http://www.transnet.co.za/Pages/Home.aspx>

Marine Fleet

- 3 x Voight Schneider tugs with 70-ton bollard pull and fourth tug on order for delivery in 2023/24
- 1 x Pilot boat

Technology

- IPMS
- Holistic, web-based system
- Integrates Marine Operations, Terminal Operations System and Reporting
- Operates across South Africa's 8 ports
- Wide range of near real-time information, 27/7
- Navi System to work containers. This is a synchronous planning and real-time control system

Current Facilities

- Container Terminal: D100
- World-class four-berth Container Terminal- Length of quay: 1300m
- Operational surface area: 72.9 ha
- Total surface area: 83.5 ha
- Number of ground slots: 11 074 TEUs
 - Stacking capacity: 55 370 TEUs
- Number of ground slots for reefers: 413
 - Number of reefer points: 1 652
- Number of ground slots (TGS)-00G: 154
- Rail tracks: Four sets for staging and one for locomotive return
 - Rail track length: Four sets at 820m each for staging of trucks
 - Rail operation 2 x RMG cranes, 4 x rail tracks and 1 x locomotive run-around track
- Land side operations: 40 x 41 ton RTG cranes
- Water side operation: 8 x Mega-Max Ship-to-Shore cranes
- 26 x AMS units at Berth D100
- Design capacity: 1 500 000 TEUs per annum
- Terminal Employees: 720

Finger Jetty

- Capacity to handle dry-bulk, break-bulk, liquid and project cargo.
- 2 x Berth dry bulk terminal
- 1 x Berth terminal to accommodate liquid bulk cargo

The liquid bulk terminal will have a capacity of 3 million tons per annum (Mtpa).

The berths were designed to accommodate 85 000 vessels.

Future Facilities

Manganese ORE Export Terminal: C100-C101

The port plans to become a global leader in manganese ore exports. The Manganese Ore Export Terminal Expansion includes storage capacity of 12 - 22 Mtpa.

This includes:

- 2 x existing berths with 85 000 Dwt and 15.5m draft
- 2,4 Mt capacity stock piling yard with capabilities of storing 25 grades of manganese ore
- Conveyor system between stock pile and quayside
- 1 x ship loader
- Rail marshalling yard continuous
- Sampling plant
- Environmental control system

In providing a globally competitive facility, the link between the port and the hinterland will be supported by:

- 3 200 rail wagons
- 109 DV electric locomotive and 12 diesel locomotives
- Infrastructure, which includes line upgrades and doublings, new loops, electrical upgrades and compilation yards

Liquid Bulk Facility: B100

- Oil tanking Grindrod Calulo (OGTC) intends to construct and operate the liquid bulk handling and storage facility
- The facility will offer tank storage for both refined and non-refined petroleum products
- Approximately 790 000 Cbm will be available for third party storage
- The natural draft is approximately 18m

Functions will include:

- Storage for local distribution
- Storage for trading activities
- Breaking crude oil and petroleum product bulk
- Producing bulk refined products
- Adding value to products by blending, injection of additives, etc.

Ship Repair

The port plans to establish a ship repair facility in the long-term.

Energy Hub

The port plans to become an energy hub, importing LNG and supporting gas to power.

SEZ INVESTMENT SERVICES



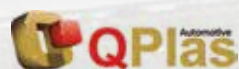
For more information on Coega SEZ Investment Services, contact:

Asanda Xawuka
Executive Manager Business Development
Telephone: 041 403 0809
E-mail: Asanda.Xawuka@coega.co.za





NMBLP



TOP 11 REASONS TO INVEST AT COEGA

Environmental & Sustainability

- Well-managed Air Quality
- Clean Water
- Open Space, Hiking and Mountain Biking Trails
- Coega as the Origins of Manufacturing
- Confluence of Major Biomes in RSA

Regional and International Logistics

- The Coega SEZ is strategically positioned on the main Southern Hemisphere east-west shipping routes
- It is the only SEZ in Africa to be served by two ports, with a combined capacity of over two million TEU (Twenty Foot Equivalent Unit) a year
- The Deep-water Port of Ngqura is the designated South African hub for container traffic, and is served by the world's top shipping lines
- Named day services connect the port to the main global markets and supply centres
- The Port of Gqeberha operates world class container, vehicle, breakbulk and bulk terminals
- The shipping links are complemented by direct road and rail links to the rest of South and Southern Africa

A Connected Zone

- There is a rail connection between the SEZ, the rest of South Africa and neighbouring countries
- Major roads provide a seamless link into the national N2 arterial highway, which connects the SEZ to the rest of the region
- The zone is integrated into Africa's newest deep-water harbour, the Port of Ngqura
- National and international connectivity for passengers and freight is provided by the Chief David Stuurman International Airport (PLZ), which is around 20 minutes travelling time away on the N2 Freeway
- It takes just 1 hour 40 minutes to fly from PLZ to OR Tambo International Airport on a route serviced by a number of airlines
- The distance to the main banking and business precincts in Gqeberha is around 20 km



Safety and Security

- A safe trading environment is important for industrialisation and boosting investor confidence
- The Coega SEZ is a safe and secure investment destination:
 - Fit-for-purpose buildings and serviced sites
 - Custom controlled areas and access controlled entryways.
 - A comprehensive physical protection system, incorporating building and perimeter intrusions detection systems, surveillance monitoring, and access control.
 - Static and roaming manned guarding with tactical response team
 - Secure and stable on-site data centre hosting of ICT infrastructure
 - Two-tier 3 Data Centres
 - ISO/IEC 20000-1:2011 for IT Service Management, and ISO IEC 27001:2013 for Information Security Management

World Class Infrastructure

- The Coega SEZ is ready to “plug and play”. All the necessary infrastructure is in place, including roads, bulk water and sewer networks, telecommunication sleeve networks, electrical substations (HV and MV), and overhead power lines (HV and MV) – all that investors are looking for and more in a world class industrial development zone

World Class Support Systems

- Geographic Information System helps investors make informed decisions on positioning their plant
- ICT Solutions for supply chain management, budgeting, procurement and financial management
- Customs Control Areas (CCA) in the Logistics and Automotive Zones. CCA and Freeport Zones, allows for duty and VAT-Suspension entry of any foreign goods intended for re-export. This means we can ensure ease of operations for zone users and enable them to import, store and manufacture goods (including processing, cleaning and repair) without being bound by various time and economic restrictions. CCA in Coega SEZ (manufacturing): 70% saving on surety bond. Our aim over the next 5 years & beyond is to create a vibrant hub of opportunity, job creation, inclusive growth, and sustainable development utilising the Coega SEZ, Legislation and Tax Incentives as a catalyst.
- Customs compliance infrastructure management
- Proven in-house expertise in delivering infrastructure projects of all sizes within budget and on time

One-Stop-Shop Investor Services Centre

- Full Human Relations support, including recruitment, training and managing labour relations
- Assistance with visa applications, work and study permits, applications for municipal services
- Assistance with applying for incentives
- Facilitation of environmental approvals and licence requirements for project development (EIAs, Basic Assessment, Air Emissions License, Waste Licence and OEMP)
- Customs services to assist with all SARS Customs registrations and permit processes in preparation for approval of facility for operational phases
- Incentives: Assist all investors to ensure optimal use of all necessary incentives available to industry (SEZ, Municipal, and Sector Specific Incentives)
- The CDC's Package of Plans approach allows statutory approvals for Site Development Plans and Building Plans to take place within 10 working days, respectively
- Construction management and operational Safety, Health and Environment (SHE) management systems in place
- SHE systems monitor and control construction and operational phases (waste management, water and air quality, storm water and effluent, alien plant eradication, open space management)
- The CDC clinic provides services during construction and operational phases

Incentives

- The CDC assists investors in their application for incentives offered by the national government, provincial legislature and local municipality. They include incentives for:
 - Training
 - Automotive Production and Development Programme (APDP)
 - Production Incentive Programme
 - Aquaculture Development and Enhancement Programme
 - Research and Development (SIID)
 - Export promotion incentives
 - Infrastructure support
 - Reduced municipal costs
- The Coega SEZ also provides some of the most affordable rates for developed and zoned industrial land in Africa

7



8



9



10



11



Skills Development

- Systems are in place to assist investors with skills development
- Advanced systems for registering work-seeker and competency-based recruitment functionality
- Advanced labour management systems in place
- Co-ordinated transport services
- Induction training capacity
- Central wage payment services
- Construction Village facilities provide accommodation, conference and training venues
- Partnership with internationally recognised Nelson Mandela University (NMU) for research and development
- Apprenticeship training centre (construction, manufacturing and MEI)

Lifestyle – the Best of All Worlds

- Nelson Mandela Bay and its surroundings offer a lifestyle that is the envy of other SEZ operators around the world
- It offers a cosmopolitan Indian Ocean lifestyle that is a unique mix of the best of African, European and Asian cultures
- Executives and key staff will find comfortable homes within a radius of 20km of the SEZ
- Nelson Mandela Bay has world-class theatres, including an opera house, museums, restaurants, beaches, public gardens, sports stadiums, gymnasiums, hospitals and shopping malls
- It is home to some of South Africa's top schools, as well as the Nelson Mandela University (NMU)
- There is plenty of opportunity to enjoy the great outdoors – Nelson Mandela Bay is the sunniest metro complex in South Africa
- Algoa Bay, the metro, is rated as one of the top water sport venues in the world and has world-renowned Blue Flag beaches
- Nelson Mandela Bay is the gateway to the world-famous Garden Route
- For those venturing further afield, the Metro is 750 km from Cape Town along the Garden Route, 1 000 km from Durban, and 1 300 km from Gauteng

Governance

- CDC has robust internal governance structures in place to prevent corruption. Strong and proven supply chain processes ensure minor and mega infrastructure projects are implemented on time, within scope and on budget

BAIC SA

About BAIC SA

Chinese Completely Knocked Down (CKD) vehicle manufacturer Beijing Automotive International Corporation (BAIC) has invested an historic R11 billion in the Coega SEZ. BAIC SA will produce passenger vehicles, SUV's, pick-up trucks and commercial vehicles.



ZONE:	I
COUNTRY:	China
SECTOR:	Automotive
INVESTMENT VALUE:	R11 billion
OPERATIONAL JOBS:	89
PRODUCT:	Passenger Vehicles, SUV's, Pick-Up Trucks

<https://www.baic.co.za/>







<http://www.vectorlog.com/>

VECTOR LOGISTICS

About Vector Logistics

Vector Logistics is a specialist frozen third-party logistics service provider (3PL) for the food industry in Southern Africa providing integrated logistics services to the retail, wholesale and food service sectors. Its products include bulk cold storage and refrigerated primary transport. This frozen distribution facility is located in Zone I of the Coega SEZ.

ZONE:	I
COUNTRY:	South Africa
SECTOR:	Logistics
INVESTMENT VALUE:	R150 million
OPERATIONAL JOBS:	174
PRODUCTS:	Cold Storage and Distribution



NATIONAL SHIP CHANDLERS

About National Ship Chandlers

National Ship Chandlers' primary objective is to maintain the highest standards of quality and service in South Africa, and consequently uphold its reputation as the country's time-honoured ship supplier of choice. In accordance with the rules of ISO9001 (2000), National Ship Chandlers' Management and staff, facilitated by our Quality Planning and Operations Division, are committed to customer satisfaction and exceeding customer needs and expectations worldwide.

ZONE:	I
COUNTRY:	South Africa
SECTOR:	Logistics
INVESTMENT VALUE:	Value not disclosed
OPERATIONAL JOBS:	32
PRODUCT:	Expanding their Ship Chandling Services



FAMOUS BRANDS

About Famous Brands

Famous Brands Limited is a holding company listed on the JSE Limited under the category Consumer Services:

Travel and Leisure, and is Africa's largest branded food service franchisor.

ZONE:	I
COUNTRY:	South Africa
SECTOR:	Logistics
INVESTMENT VALUE:	R20 million
OPERATIONAL JOBS:	56
PRODUCT:	Food Storage and Logistics





<http://www.digistics.co.za/>

DIGISTICS

About Digistics

Digistics is strategically placed in the Quick Service Restaurant (QSR) industry and provides an array of key service delivery options to all of their customers. The QSR sector has seen massive growth over the last few years and they are continually expected to change their business to take on more responsibility in the supply chain.

ZONE:	I
COUNTRY:	South Africa
SECTOR:	Logistics
INVESTMENT VALUE:	R20 million
OPERATIONAL JOBS:	94
PRODUCT:	Fast Food Warehousing for Distribution to KFC's





PE COLD STORAGE

About PE Cold Storage

This company operates a pre-cooling and storage facility in the Coega SEZ for the local citrus and deciduous fruit industries. PE Cold Storage signed with Coega in 2007.

ZONE:	I
COUNTRY:	South Africa
SECTOR:	Logistics
INVESTMENT VALUE:	R50 million
OPERATIONAL JOBS:	96
PRODUCT:	Cold Storage, Export Facilities

 PE COLD STORAGE (PTY) LTD



ISUZU SA

About Isuzu SA

Isuzu Motors South Africa is a wholly owned subsidiary of Isuzu Motors Limited of Japan. It is the first manufacturing and distribution organisation outside of Japan where Isuzu has a 100% ownership. It serves as an important base for Isuzu's long term growth throughout Africa. Isuzu Motors South Africa manufactures, markets and distributes Isuzu light, medium and heavy commercial vehicles and recently added a sport utility vehicle, the mu-X, to its portfolio. Isuzu products are sold through a network of 80 dealers across South Africa and 35 dealers in Sub-Saharan Africa.

ZONE:	I
COUNTRY:	Japan
SECTOR:	Automotive
INVESTMENT VALUE:	R15 million
OPERATIONAL JOBS:	153
PRODUCT:	Parts Distribution Centre



APM TERMINALS

About APM Terminals

APM Terminals operates a Global Terminal Network of over 23 000 employees on five continents which includes 62 operating port and terminal facilities in 40 countries and over 170 Inland Services operations in 48 countries. The company provides port management and operations to over 60 liner shipping customers who serve the world's leading importers and exporters of containerised and other cargoes.

ZONE:	I
COUNTRY:	Denmark
SECTOR:	Logistics
INVESTMENT VALUE:	R50 million
OPERATIONAL JOBS:	36
PRODUCT:	Container Terminal

 Lifting Global Trade.
APM TERMINALS



<https://www.apmterminals.com/>

THE COURIER GUY

About The Courier Guy

The Courier Guy was established in 2000 as a local same-day delivery service. It is now a well established franchise and contractor based courier company that offers a wide range of local, national and international courier and distribution services, and is situated in Zone I of the Coega SEZ.

ZONE:	I
COUNTRY:	SA
SECTOR:	Logistics
INVESTMENT VALUE:	R1 million
OPERATIONAL JOBS:	66
PRODUCT:	Courier Services



LACTALIS SA

About Lactalis SA

Lactalis South Africa is the new name for Parmalat SA, one of the major players in the South African dairy industry and has been active since 1998. The brand focuses on quality and the annual array of national and international awards our products receive are testament to this. Lactalis SA forms part of Lactalis, a French international dairy company.

ZONE:	I
COUNTRY:	France
SECTOR:	Agro-Processing
INVESTMENT VALUE:	R3.3 million
OPERATIONAL JOBS:	97
PRODUCT:	Dairy Products





<https://dynafoam.co.za/>

DYNAFOAM CONVERTERS

About DynaFoam Converters

Established and commissioned early 2011 and centrally based in the Eastern Cape Automotive hub, DynaFoam Converters is committed to service all sectors of Industry with high quality foam and rubber components sourced worldwide to meet client's expectations.

ZONE:	I
COUNTRY:	South Africa
SECTOR:	Automotive
INVESTMENT VALUE:	R32 million
OPERATIONAL JOBS:	47
PRODUCT:	Pressed Foam, Rubber and Felt components





MSC SEZ

About MSC SEZ

Mediterranean Shipping Company (MSC) has an innovative, flexible and unique approach to shipping that has allowed the company to grow significantly over the last twenty years. Founded in 1970, MSC is now the biggest user of the South African ports and by 2003 was the second biggest container carrier in the world.

ZONE:	I
COUNTRY:	South Africa
SECTOR:	Automotive
INVESTMENT VALUE:	R50 million
OPERATIONAL JOBS:	138
PRODUCT:	Shipping Containers



<https://www.msc.com/zaf>

ABSOLUTE WIND

About Absolute Wind

Absolute Wind focusses on the transportation of wind turbine generator components for the renewable wind energy industry. Our fleet of crane trucks & horses, multi axle & extendable trailers operates nationally and beyond the borders of South Africa offering turnkey solutions.

ZONE:	I
COUNTRY:	South Africa
SECTOR:	Logistics
INVESTMENT VALUE:	Value not disclosed
OPERATIONAL JOBS:	28
PRODUCT:	Abnormal Transport



ALE

About ALE

ALE provides solutions to any heavy lifting or transport challenge, with their unique global network and an unparalleled fleet of equipment. Situated in Zone I of the Coega SEZ, ALE has extensive engineering expertise and high quality and safety standards deliver value to a wide breadth of industry sectors and projects.

ZONE:	I
COUNTRY:	South Africa
SECTOR:	Logistics
INVESTMENT VALUE:	Value not disclosed
OPERATIONAL JOBS:	11
PRODUCT:	Abnormal Transport





<https://www.dhl.com/za-en/home.html>

DHL

About DHL

Deutsche Post DHL Group is the world's leading logistic company. The Group is home to two strong brands: DHL offers a comprehensive range of parcel and international express service, freight transport, and supply chain management services, as well as e-commerce logistics solutions. Deutsche Post is Europe's leading postal and parcel service provider. Deutsche Post DHL Group employs approximately 570,000 people in over 220 countries and territories worldwide.

ZONE:	I
COUNTRY:	South Africa
SECTOR:	Logistics
INVESTMENT VALUE:	R17.9 million
OPERATIONAL JOBS:	57
PRODUCT:	Courier Services



FAW-SA

About FAW-SA

China FAW Group Co., Ltd., founded as the “First Automobile Works”, is the birthplace of China’s automotive industry. As China’s oldest and largest passenger car, bus, coach, and commercial truck manufacturer, the leading pioneer in the industry, FAW-SA reaffirms its dominant position year-after-year with exciting and cutting edge vehicles that meet and exceed the demands of their customers around the world.

ZONE:	2
COUNTRY:	China
SECTOR:	Automotive
INVESTMENT VALUE:	R600 million
OPERATIONAL JOBS:	146
PRODUCT:	Assemble of Trucks and Passenger Cars



<http://www.fawauto.co.za/>

HELLA

About Hella

HELLA Automotive South Africa (HASA), situated in Zone 2 of the Coega SEZ, delivers a comprehensive range of products together with high levels of service and support in its sub-Saharan domain. HELLA offers products and services ranging from automotive lighting and electronics, tools and special equipment for vehicles, caravans and trucks.

ZONE:	2
COUNTRY:	Germany/SA
SECTOR:	Automotive/OE/IAM
INVESTMENT VALUE:	R53 million
OPERATIONAL JOBS:	38
PRODUCT:	Automotive Tools and Services



<https://www.hella.com/hella-za/>





<http://www.zacpak.co.za/>

ZACPAK

About ZacPak

ZacPak provides goods and services in the freight movement industry. Having settled at Coega in 2015, the company offers warehousing, transport and services such as storage, import and exports services like container storage and packing, short and long term storage as well as state of the art container freight stations specialising in loading and unpacking of international shipping containers.

ZONE:	2
COUNTRY:	South Africa
SECTOR:	Logistics
INVESTMENT VALUE:	R4.5 million
OPERATIONAL JOBS:	37
PRODUCT:	Import and Export Services, Warehousing



CORRO MASTER

About Corro Master

Corro Master is a low-cost, independent manufacturer of Corrugated Cardboard Packaging mainly operating in the Eastern Cape. Being an independent company, it has to stay one step ahead of its opposition (larger corporate companies) at all times, and remains the lowest cost producer in the sector in which it finds itself.

ZONE:	3
COUNTRY:	South Africa
SECTOR:	Light Manufacturing
INVESTMENT VALUE:	R90 million
OPERATIONAL JOBS:	78
PRODUCT:	Manufacturing of Corrugated Packaging





AIR PRODUCTS

About Air Products

Air Products South Africa (Pty) Limited manufactures, supplies and distributes a wide variety of industrial and specialty gas products to the Southern African region. Founded in 1969, Air Products South Africa is a subsidiary of Air Products and Chemicals Incorporated (APCI), a global organisation.

ZONE:	3
COUNTRY:	South Africa
SECTOR:	Chemicals
INVESTMENT VALUE:	R300 million
OPERATIONAL JOBS:	10
PRODUCT:	Production of Industrial Gases



<http://airproductsafrica.co.za/>

AFROX

About Afrox

African Oxygen Limited (Afrox) was founded in 1927 and is Southern Africa's market leader in industrial gases, Liquefied Petroleum Gas (LPG) and welding products. They operate in South Africa and seven other African countries. They have an associate company in Mauritius and manage various operations in five other African countries on behalf of The Linde Group (Linde) – their global gases, engineering and technology parent company.

ZONE:	3
COUNTRY:	South Africa
SECTOR:	Chemicals
INVESTMENT VALUE:	R300 million
OPERATIONAL JOBS:	17
PRODUCT:	Development of Air Separation Unit



<http://www.afrox.co.za/>





<http://www.dynamicfood.com/>

DYNAMIC COMMODITIES

About Dynamic Commodities

Dynamic Commodities was founded in 1996 as a processor of frozen fruits. The company buys pineapples, apples, oranges, lemons and coconuts. Employees remove the fruit pulp from the shells by hand and fill each fruit shell with fruit sorbet made in its ice cream plant.

ZONE:	3
COUNTRY:	South Africa
SECTOR:	Agro-processing
INVESTMENT VALUE:	R50 million
OPERATIONAL JOBS:	2 247
PRODUCT:	Fruit Processing for Export



DAIRY GROUP

About Dairy Group

At Dairy Group, their green technology ensures the production of dairy products that are of exceptional quality. The organisation's advanced "One Step" technology allows for substantial savings in terms of energy and water consumption and improved production efficiencies with less impact on the environment.

ZONE:	3
COUNTRY:	South Africa
SECTOR:	Agro-processing
INVESTMENT VALUE:	R129 million
OPERATIONAL JOBS:	357
PRODUCT:	Dairy Processing Plant (Milk and Cheese)



<http://www.coegadairy.com/>



HIMOINSA

About Himoinsa

Himoinsa is an international business focusing on design, manufacturing and distributing electricity generation equipment. It has been operating in Africa since 1990 and officially opened its office at Coega in 2017.

ZONE:	3 - Multi User Facility
COUNTRY:	South Africa
SECTOR:	Energy
INVESTMENT VALUE:	R57 million
OPERATIONAL JOBS:	8
PRODUCT:	Warehousing and Servicing of Generators



<http://www.himoinsa.com/>

OLM ENGINEERING

About OLM Engineering

Ocean Legacy Marine Engineering (OLME) specialises in the management and execution of turnkey projects involving the Mechanical Installation of Stainless Steel and Carbon Steel Piping Systems, for the Pharmaceutical, Food & Beverage, Water Treatment and Automotive Industry sectors.

ZONE:	3 - Multi-user Facility
COUNTRY:	South Africa
SECTOR:	General Manufacturing
INVESTMENT VALUE:	R1 million
OPERATIONAL JOBS:	18
PRODUCTS:	Specialised Stainless Steel Fabrication



<http://www.legacymarine.co.za/>



CHEMCHAMP

About ChemChamp

CHEMCHAMP solvent recyclers and distillation equipment offer unprecedented performance and cost reductions to client operations by providing clean solvent 24/7. CHEMCHAMP's easy-to-use equipment maximizes performance by reducing waste, disposal costs and downtime.

ZONE:	3 - Multi-user Facility
COUNTRY:	South Africa
SECTOR:	Manufacturing Sector
INVESTMENT VALUE:	Value not disclosed
OPERATIONAL JOBS:	9
PRODUCT:	Manufacturing of Machinery





MZANTSI COMMERCIAL SOLUTIONS

About Mzantsi Commercial Solutions

Mzantsi Commercial Services (MCS) is a Port Elizabeth based contract packing business, offering packing solutions for a variety of foods in a customised selection of packaging formats, and is 100% black female owned. MzantsiCS Food Bottling Labelling and Packaging, a division of Mzantsi Commercial Solutions (Pty) Ltd, is a reasonably priced, environmentally sensitive, convenient service provider, offering packing services to food manufacturers and/or brand owners thus taking away the need to invest in packing equipment, human resources and facilities.

ZONE:	3 - Multi-user Facility
COUNTRY:	South African
SECTOR:	Logistics
INVESTMENT VALUE:	R1.3 million
OPERATIONAL JOBS:	14
PRODUCT:	Bottling and Labelling





TRANSMERCH AFRICA (TMA)

About TMA

TransMerch Africa (Pty) Ltd (“TMA”) was established in 2018 with the aim of becoming the leading local AdBlue® manufacturer and distributor in South Africa. The company initially operated as a distributor of a Major Oil Distributor’s AdBlue® product.

In 2019, TMA entered into a strategic partnership with SCR Solutions Benelux BV (Netherlands) - the world’s leading AdBlue® Plant Equipment Manufacturers - to setup its own local AdBlue® manufacturing plants.

ZONE:	3 - Multi-user Facility
COUNTRY:	South Africa
SECTOR:	Automotive
INVESTMENT VALUE:	Value not disclosed
OPERATIONAL JOBS:	15
PRODUCT:	Manufacturer of ADBLue





WNS

About WNS

WNS (Holdings) Limited (NYSE: WNS) is a global Business Process Management (BPM) leader. They offer business value to 200+ clients around the world by combining operational excellence with deep domain expertise in key industry verticals, including banking and financial services, healthcare, insurance, manufacturing, media and entertainment, consulting and professional services.

ZONE:	4
COUNTRY:	India
SECTOR:	Business Process Outsourcing
INVESTMENT VALUE:	R33.2 million
OPERATIONAL JOBS:	628
PRODUCT:	Call Centre



<https://www.wns.co.za/>

DISCOVERY

About Discovery

Discovery is one of the largest companies in SA and offers a range of products e.g. life and insurance policies. Through its range of products, it has developed a call centre in the BPO of the Coega SEZ which is operating in Zone 4. Discovery has contributed a lot to the Port Elizabeth economy as it is the largest employer in the Coega SEZ.

ZONE:	4
COUNTRY:	South Africa
SECTOR:	Business Process Outsourcing
INVESTMENT VALUE:	R15 million
OPERATIONAL JOBS:	1 083
PRODUCT:	Call Centre



<https://www.discovery.co.za/>

SANITECH

About Sanitech

In 2007, Sanitech established its Hygiene division. This division is now a leading service provider of professional washroom hygiene services. It offers a comprehensive range of effective, durable and reliable hygiene products and services. These products include sanitisers, wipes, toilet tissue dispensers, sanitary bins, hand washing and hand drying components.

ZONE:	5
COUNTRY:	South Africa
SECTOR:	Chemicals
INVESTMENT VALUE:	R10 million
OPERATIONAL JOBS:	21
PRODUCT:	Waste Water Treatment Plant





<https://cemza.co/>

CEMZA

About Cemza

Cemza is involved in the construction of a cement grinding facility, in the Coega SEZ, in Zone 5, for the supply of cement to the local market. The project is being executed through a joint venture between Cemza Ventures and Heidelberg Cement. Heidelberg Cement is one of the world's largest building materials companies with around 60,000 employees, at more than 3,000 production sites in around 60 countries on five continents.

ZONE:	5
COUNTRY:	India
SECTOR:	Construction Material
INVESTMENT VALUE:	R380 million
OPERATIONAL JOBS:	133
PRODUCT:	Cement



KENAKO CONCRETE

About Kenako Concrete

Kenako Concrete (Pty) Ltd., a new company, has entered the Port Elizabeth ready mix concrete production and distribution market with the establishment of its first plant in the Coega SEZ in September 2017.

ZONE:	5
COUNTRY:	South Africa
SECTOR:	Construction Materials
INVESTMENT VALUE:	R78 million
OPERATIONAL JOBS:	32
PRODUCT:	Manufacture of Construction Material





<https://www.bosun.co.za/>

BOSUN BRICKS

About Bosun Bricks

Established in 1993, Bosun is a privately owned company, committed to our promise, "Expect the best". They manufacture and supply SANS approved kerbs, a comprehensive range of paving blocks, the Robust Block and Versoblock® retaining wall system. As a recycling initiative, Bosun also manufactures limited quantities of non-ash stock bricks and hollow blocks.

ZONE:	5
COUNTRY:	Germany
SECTOR:	Construction
INVESTMENT VALUE:	R50 million
OPERATIONAL JOBS:	39
PRODUCT:	Manufacturer and Distributor of Pre Cast Products





COEGA STEELS

About Coega Steels

Agni Steels (India) is one of the leading secondary steel manufacturers in the South of India and has built up an excellent reputation for the quality of their steel products under the brand “AGNI TMT” in that region. They have been operating for the past 20 years in the steel industry and were the first secondary steel manufacturer of Mild Steel Billets in India to receive ISO certification. Agni Steels SA Pty (Ltd) is the first Mini Steel melting unit to be commissioned in the industrial history of the Eastern Cape.

ZONE:	6
COUNTRY:	India
SECTOR:	Metals
INVESTMENT VALUE:	R150 million
OPERATIONAL JOBS:	313
PRODUCT:	Steel Manufacturer





<http://www.cerebos.co.za/>

CEREBOS

About Cerebos

This company is operating in the Chemicals sector. Cerebos traces its name to 1892 when a French chemical engineer decided to mix calcium phosphate with salt and invented dry-pouring salt. It has other companies around the globe. The one situated in Zone 7 of the Coega SEZ was signed in 2007.

ZONE:	7
SECTOR:	Chemicals
COUNTRY:	South Africa
INVESTMENT VALUE:	R60 million
OPERATIONAL JOBS:	179
PRODUCT:	Salt Production



ELECTRAWINDS

About Electrawinds

Electrawinds has invested R1.2 billion in the Coega Wind Farm Project to build 25 turbines. Each wind turbine has a capacity of 1.8 MW which translates into an annual yield 5,700,000 kWh, enough energy to power about 1,700 households. The electricity generated by the wind farm is fed into the national grid and distributed by Nelson Mandela Bay Metropolitan to households within the metro. The wind farm supplies the Nelson Mandela Bay with an average of 45 MW of green energy.

ZONE:	11
COUNTRY:	Belgium
SECTOR:	Energy
INVESTMENT VALUE:	R1 billion
PRODUCT:	Wind Turbines



DEDISA PEAKING POWER PLANT

About Dedisa Peaking Power Plant

A consortium led by international power company GDF Suez is a R3.5 billion peaking power station within the Coega SEZ. Consisting of two open-cycle gas turbines (OCGTs) able to produce 342MW – roughly half of Nelson Mandela Bay’s power requirement – Dedisa essentially brought an end to the types of rolling blackouts which crippled the region’s economy in 2008.

ZONE:	13
COUNTRY:	France
SECTOR:	Energy
INVESTMENT VALUE:	R3.5 billion
OPERATIONAL JOBS:	30
PRODUCT:	Power Generating Plant



<https://www.peakers.com/dedisa.html>

BIGGEST INVESTORS BY VALUE



**BAIC SA
R11 BILLION**



**DEDISA PEAKING
POWER PLANT
R3.5 BILLION**

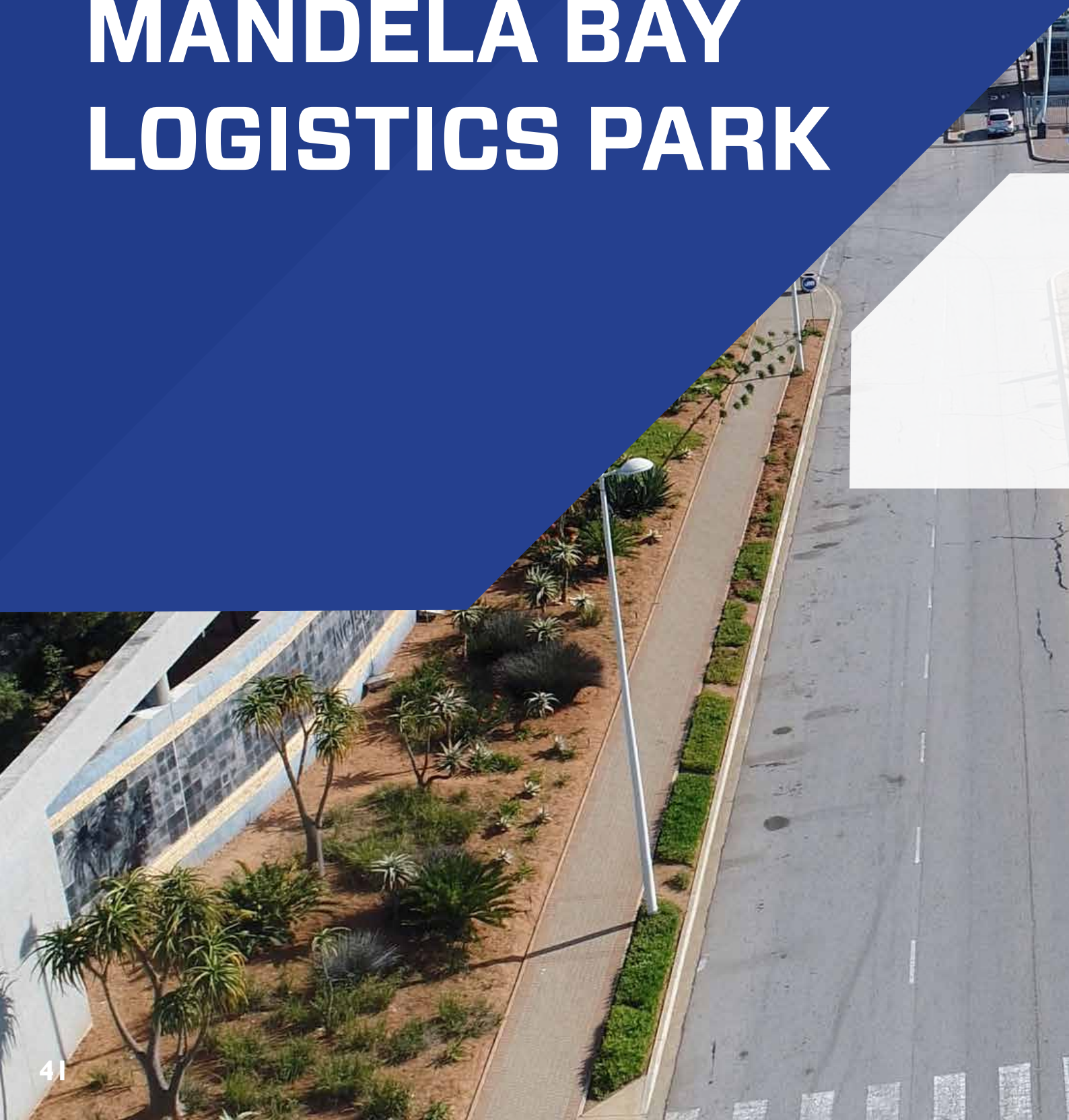


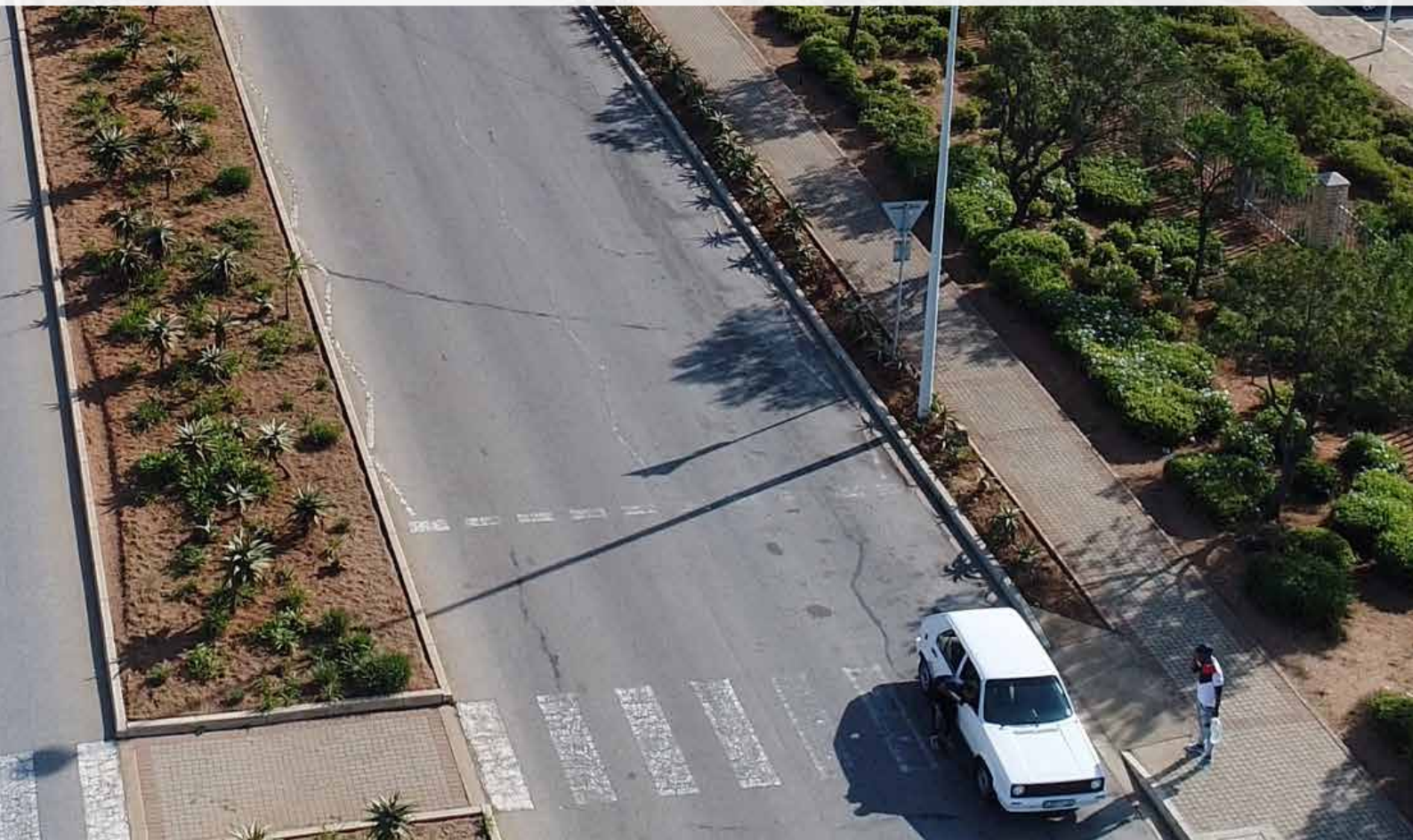
**ELECTRAWINDS
R1 BILLION**



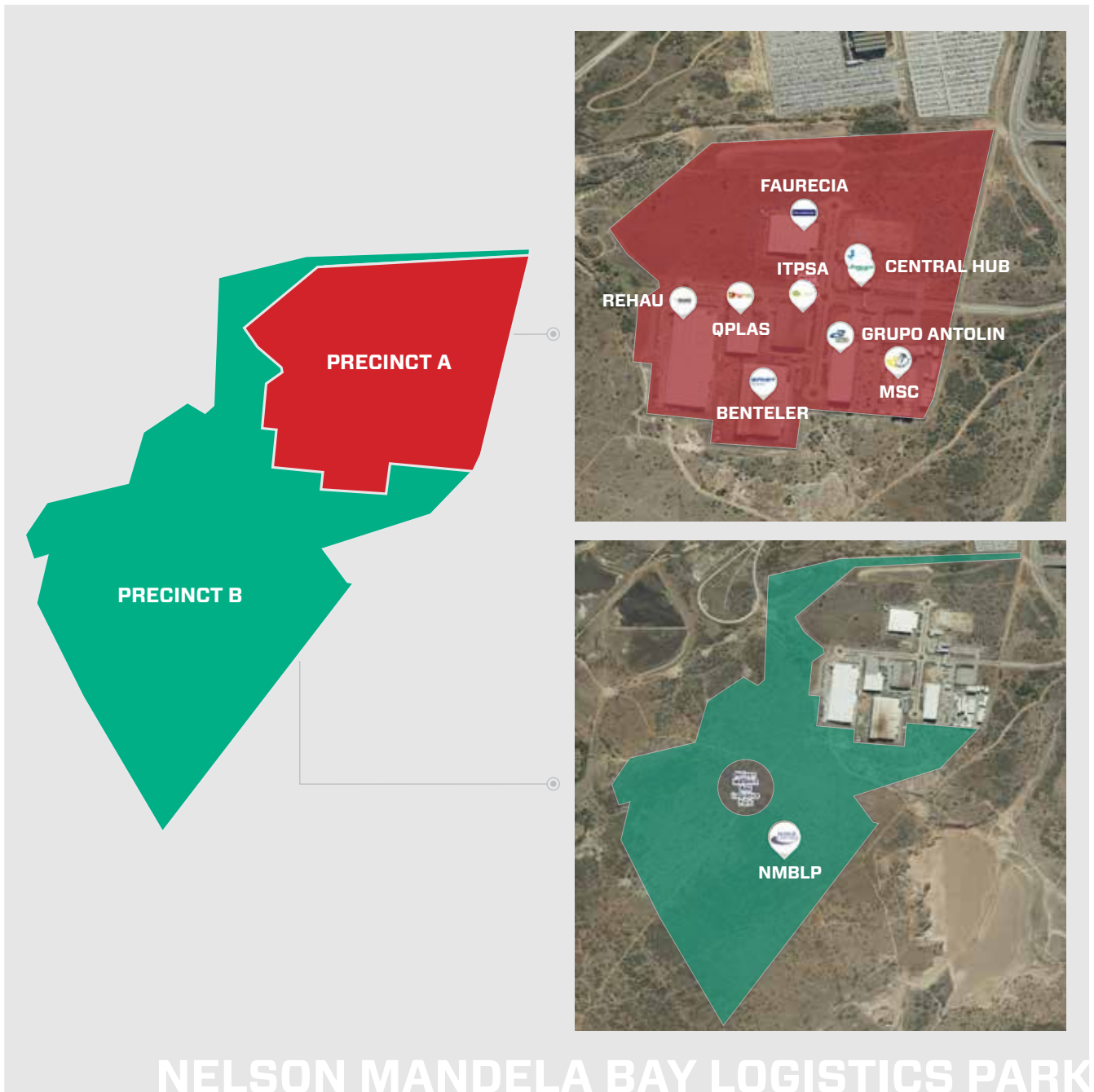
**FAW
R600 MILLION**

NELSON MANDELA BAY LOGISTICS PARK





AREA PROFILE





<http://www.grupoantolin.com/>

GRUPO ANTOLIN

About Grupo Antolin

Multi-national leader in the conception and manufacture of interior automotive components and modular systems.

ZONE:	NMBLP
COUNTRY:	Spain
SECTOR:	Automotive
INVESTMENT VALUE:	R124 million
OPERATIONAL JOBS:	251
PRODUCT:	Headliners and Panels



BENTELER

About Benteler

The Benteler Group is organised into the three Divisions of Benteler Automotive, Benteler Steel/Tube, and Benteler Distribution. With almost 150 locations in around 40 countries, Benteler is always at the side of its business partners. Not only in terms of geographical proximity, but also strategically: “We support our partners from product idea to series production. We are where you need us.”

ZONE:	NMBLP
COUNTRY:	Germany
SECTOR:	Automotive
INVESTMENT VALUE:	R173 million
OPERATIONAL JOBS:	519
PRODUCT:	Metal Based Products and Systems



<https://www.benteler.com/>





<http://www.faurecia.com/en>

FAURECIA

About Faurecia

Faurecia is located in the NMB Logistics Park and provides innovative solutions to automotive challenges. Faurecia works hand in hand with automakers to develop cars that are cleaner, lighter, more comfortable and easier to customise. They provide specialised vehicle parts such as seating, interiors and clean vehicle mobility systems.

ZONE:	NMBLP
COUNTRY:	France
SECTOR:	Automotive
INVESTMENT VALUE:	R120 million
OPERATIONAL JOBS:	224
PRODUCT:	Vehicle Seating, Interior and Mobility Systems



SCHNELLECKE

About Schnellecke

The Schnellecke Group is an internationally operating, family-owned company that offers a variety of logistics services. One of the major focuses of these activities is value-added logistics for the automotive industry. The company develops complete concepts that range from transport and warehousing, to pre-assemblies and value-added services, to sequential production of individual parts and modules and packaging suitable for containers. Furthermore, Schnellecke produces individual car body parts and car body modules for vehicle manufacturing under the KWD Automotive umbrella brand.

ZONE:	NMBLP
COUNTRY:	South Africa
SECTOR:	Automotive
INVESTMENT VALUE:	Value not disclosed
OPERATIONAL JOBS:	16
PRODUCT:	Automotive Manufacturing and Logistics



<https://www.schnellecke.com/>



Q-PLAS

About Q-Plas

Q-Plas is an owner managed, 1st tier automotive component supplier. The company has a BBBEE 4 rating as well as IATF 16949 accreditation. Q-Plas focuses on injection moulding of interior and exterior A surface components as well as exterior mirror and other sub-assemblies.

ZONE:	NMBLP
COUNTRY:	South Africa
SECTOR:	Automotive
INVESTMENT VALUE:	R165.4 million
OPERATIONAL JOBS:	192
PRODUCT:	Auto Components



<http://www.q-plas.co.za/>

REHAU

About REHAU

Expertise and innovative spirit have made REHAU a leading systems and service provider for polymer-based solutions in construction and automotive industry. By combining strong development capabilities with decentralised sales and service excellence, they have become one of the top providers in the market.

ZONE:	NMBLP
COUNTRY:	Germany
SECTOR:	Automotive
INVESTMENT VALUE:	R325 million
OPERATIONAL JOBS:	264
PRODUCT:	Auto Components Supplier to VW





<http://www.itpsa.com/en/>

ITPSA

About ITPSA

Industrial Técnica Pecuaria, S.A. (ITPSA), is a company established in 1968 and a leading manufacturer of supplements for animal feeds. All ITPSA's products are the result of ITPSA's own research and have been designed for best production results with maximum profitability, while offering a technical analysis service in its own laboratory which allows the creation of new formulations and an exhaustive quality control.

ZONE:	NMBLP
COUNTRY:	South Africa
SECTOR:	Agro-processing
INVESTMENT VALUE:	R30 million
OPERATIONAL JOBS:	87
PRODUCT:	Cigarette Processing



Industrial Técnica
Pecuaria, S.A.



MICB

About MICB

Motor Industry Customs Brokers (MICB) specialises in all aspects of the Automotive Production Development Programme (APDP) including preparing and finalising the Production Incentive (PI), Forms CI, as well as the Standard Material Declaration (SMD).

ZONE:	NMBLP
COUNTRY:	South Africa
SECTOR:	Automotive
INVESTMENT VALUE:	Value not disclosed
OPERATIONAL JOBS:	7
PRODUCT:	Auto Claims



<http://www.micb.co.za/>



MSC SA

About MSC SA

Mediterranean Shipping Company (MSC) has an innovative, flexible and unique approach to shipping that has allowed the company to grow significantly over the last twenty years. Founded in 1970, MSC is now the biggest user of the South African ports and by 2003 was the second biggest container carrier in the world.

ZONE:	NMBLP
COUNTRY:	South Africa
SECTOR:	Automotive
INVESTMENT VALUE:	R50 million
OPERATIONAL JOBS:	138
PRODUCT:	Shipping Containers



<https://www.msc.com/zaf>

NON-SEZ PROJECT MANAGEMENT SERVICES



For more information on the External Services, contact:

Chuma Mbande
Executive Manager, Business Development
Telephone: 031 586 1760
E-mail: Chuma.Mbande@coega.co.za



About Non-SEZ External Services

The Coega Development Corporation (CDC) has expanded its role from developing and operating the 9 003ha Coega Special Economic Zone (SEZ) and Nelson Mandela Logistics Park (NMBLP), located in the Nelson Mandela Bay Municipality (NMBM), to being Implementation Agents (IA) of choice on various government contracts for a range of infrastructure projects and facilities maintenance. The objective is to provide the government with the capacity on infrastructure project management to fast track service delivery. The infrastructure projects where the CDC is IA are situated throughout the country and the rest of the continent, for example, Gauteng, Western Cape, Zimbabwe, Cameroon/ Central African Republic and Nigeria.

Therefore, the CDC's Non-SEZ Project Management Service offering includes:

- Project Methodology and Systems as per the state gate model
- Development of reporting and monitoring systems
- Conceptualisation of projects
- Integrated planning and budgeting
- Development of business plans
- Stakeholder analysis and engagement programmes
- Procurement of service providers
- On-the-job training and contractor development
- Procurement of equipment and human resources
- Post-implementation/operations and maintenance planning
- The CDC has satellite offices in Port Elizabeth, East London, Durban, Pretoria, and Cape Town in order to provide efficient service to our clients.

The CDC's project management division is a highly-skilled, fully resourced business division which, through the provision of project management services, facilitates the implementation of infrastructure projects for the benefit of the Eastern Cape Province and the country and ensures that world-class project management services are offered to all clients.

SEZ DEVELOPMENT

TASEZ



About TASEZ

The Tshwane Automotive Special Economic Zone (TASEZ) is Africa's First Automotive City, located in the Gauteng Province, the green City of Tshwane, South Africa's Capital City. It is an attractive world-class automotive city and a preferred investment destination for the automotive industry on the African Continent. Its proximity to an established automotive industry allows for increased economies of scale and scope, thereby lowering the cost of doing business. The SEZ offers world-class customised solutions, incentives, support services and systems for manufacturers seeking excellence, productive and progressive location.

The SEZ is a catalyst for employment, transformation and socio-economic development and industry growth. It boasts the most skilled labour in the sector; easy access to a strong consumer base, and connectivity to both suppliers and potential markets whilst promoting export-orientated industries and local integration.

<https://www.tasez.co.za/>





DEPARTMENT OF HEALTH INFRASTRUCTURE (DOH)





CECILIA MAKIWANE HOSPITAL

DEPARTMENT:	DoH-Infrastructure
LOCATION:	Mdantsane
VALUE:	R935.4 million
JOBS CREATED:	3606





FREERE HOSPITAL

DEPARTMENT: DoH-Infrastructure
LOCATION: East London
VALUE: R167.6 million
JOBS CREATED: 545





Oncology Unit Healthcare Technology

DEPARTMENT:	DoH-Infrastructure
LOCATION:	East London
VALUE:	R17 million
JOBS CREATED:	Value not disclosed





FRONTIER HOSPITAL - CAS/OPD

DEPARTMENT:	DoH-Infrastructure
LOCATION:	CHDM
VALUE:	R140 million
JOBS CREATED:	661





KHOTSONG HOSPITAL - RSDP

DEPARTMENT:	DoH-Infrastructure
LOCATION:	Matatiele
VALUE:	R252 million
JOBS CREATED:	159





ST LUCY'S HOSPITAL

DEPARTMENT: DoH-Infrastructure
LOCATION: St Cuthberts near Tsolo
VALUE: R120 million
JOBS CREATEDS: 102





LUSIKISIKI VILLAGE CLINIC

DEPARTMENT: DoH-Infrastructure
LOCATION: Lusikisiki
VALUE: R11.2 million
JOBS CREATED: 256





JOSE PEARSON TB HOSPITAL

DEPARTMENT: DoH-Infrastructure
LOCATION: Cacadu
VALUE: R2.2 million
JOBS CREATED: 49





MARJORIE PARRISH TB HOSPITAL

DEPARTMENT: DoH-Infrastructure
LOCATION: Port Alfred
VALUE: R36.9 million
JOBS CREATED: 133





ZITHULELE DISTRICT HOSPITAL

DEPARTMENT: DoH-Infrastructure
LOCATION: Mqanduli
VALUE: R889 million (Construction)
JOBS CREATED: 2000 (Planned number of jobs)



EMERGENCY
MAIN
ENTRANCE



BAMBISANA DISTRICT HOSPITAL

DEPARTMENT:	DoH-Infrastructure
LOCATION:	Lusikisiki
VALUE:	R557m (Construction)
JOBS CREATED:	500 (Planned number of jobs)



DEPARTMENT OF EDUCATION INFRASTRUCTURE (DOH)





ANTON LEMBEDE MATHEMATICS, SCIENCES & TECHNOLOGY ACADEMY

DEPARTMENT:

DoE-KZN

LOCATION:

Durban

VALUE:

R257.7 million



BEDFORD PRIMARY SCHOOL

DEPARTMENT: DoE-EC
LOCATION: Amathole
VALUE: R36.7 million





AV BUKANI PRIMARY SCHOOL

DEPARTMENT: DoE-EC
LOCATION: Addo
VALUE: R12.3 million





MANQULO J.S.S

DEPARTMENT: DoE-EC
LOCATION: Butterworth
VALUE: R15.1 million





SOPHUMELELA JP SCHOOL

DEPARTMENT:

DBE-EC

LOCATION:

Amathole

VALUE:

R16.5 million



OTHER NON-SEZ SERVICES







BLUEWATER BAY SUNRISE HOTEL

A luxurious Boutique Hotel 10 minutes from the hustle and bustle of the PE City, where exceptional service, decadent food and opulent facilities combine with the ocean breeze to deliver a warm and unique experience.

This first of its kind Boutique Hotel in the upmarket Bluewater Bay; the Bluewater Bay Sunrise Hotel boasts 58 tastefully decorated bedrooms complete with a full service restaurant, bar, fitness centre, outdoor pool and conferencing facilities.

Bedrooms comprise of Standard and Superior rooms fitted with king beds, separate bath and shower and equipped with double vanities for extra space. Room types vary from overlooking the pool, to rooms with balconies and the top floor contains rooms with beautiful sea views.





The hotel offers accessible bedrooms and is fully accessible in all public areas and conference facilities for wheelchair access.

In keeping with our sustainability policy, all bathrooms are fitted with dispensers containing body wash, shampoo, liquid soap and hand cream. All rooms are also equipped with coffee and tea making facilities, iron and ironing boards, bar fridge, laptop safes, Smart TV's with DSTV with sufficient plug points for 2 & 3 pin plugs and USB connectivity.

The hotel offers uncapped, high speed, complimentary guest wifi and the Sunrise Team is on hand to serve you with only the finest hospitality.

<http://www.sunrisehotel.co.za/>





Events Management Services

Bluewater Bay Sunrise Hotel has grown into a diversified establishment with a growing national & international client base. It provides Events Management Services, (EMS), which include, amongst others, Events Infrastructure, Exhibitions, Events Marketing, Events Management, Graphic Design Solutions, Photography and Video Production.

Bluewater Bay Sunrise Hotel offers our valuable Clients the PVC and VIP Glass Panel Marquees for hire as well as good quality modern furniture. The good quality PVC and VIP Glass Panel Marquees can accommodate a maximum of 1000 people or is scalable to 500 people, to suit needs.

The Events Management team, which include qualified Marquee Riggers and Structural Engineers, have years of experience in the event and hospitality industry. They provide personalised and professional service. We work hard in order to offer our customers first class service, no matter the size of the event.



VULINDLELA ACCOMMODATION AND CONFERENCE CENTRE

The state-of-the-art Vulindlela Accommodation and Conference Centre has become synonymous with high-end events and conferences. A fully equipped facility which provides a tranquil environment for delegates who favour a relaxed atmosphere, the centre is tucked away from the hustle and bustle of the city, which remains just a short distance away.

The trendy Vulindlela accommodation provides comfortable living for our tenants and guests. Tucked away from the hustle and bustle of the city centre, Vulindlela is a home away from home for individuals, groups, public departments and the private sectors.



<http://www.coegavulindlela.co.za/>

SOUTH AFRICAN MARINE FUELS (SAMF)

The South African Marine Fuels (SAMF) is currently one of the 3 bunkering operators in the Algoa Bay. The Eastern Cape hosts the only port in the whole of South Africa that has licensed offshore Bunkering operations. The company was founded by women and partnered with a company from Switzerland. 3 Barges chartered by SAMF in operation 24/7 services. The company promotes women participation in the oceans economy, currently 40% of SAMF employees are black females. Through investment in active mentorship programs and skills transfer the Eastern Cape Province can unlock many opportunities.

The entry of SA Marine Fuels into the offshore bunkering industry signals the winds of change in the Eastern Cape in as far as the Ocean Economy. Durban, Cape Town, Richards Bay are all well-known ports to the global shipping and industries; however, Algoa Bay is now firmly a leading Bunker and ship Service Provider to a wider market and is not restricted by port calling ships but general passing traffic. In addition, Algoa Bay is positioned as an attractive stopover en-route to various destinations. The bay is located a few miles off the heavily trafficked shipping lanes. Aside from the Fuel Oil supply from the Bunker barges – ship owners are also using the other services available promoting economic growth. Commencement of Offshore Bunkering in 2016, the provincial economy has witnessed huge growth in new investment in the maritime sector ranging from ship chandlers to shipping agencies, launch boat services, transport and lodgings, vessel supplies, and technical services, to mention but a few.



<http://www.southafricanmarinefuels.com/>



COEGA MARINE SERVICES

South Africa is a maritime country defined by the characteristics of its oceans, heritage, international trade patterns and geography that boasts of a significant marine real estate. Although situated far from her major trade partners and markets, South Africa occupies a geostrategic location on a major sea-trading route that lies at the heart of the South-South Trade, which connects the Asia markets with those of the Americas. South Africa derives its maritime interests from its trade and geo-political aspirations of being a regional power located at the southern tip of Africa.

South Africa has a developing maritime transport sector potentially able to contribute substantially to the economy of the country and support the national development plan. The National Transport Master Plan (NATMAP) 2050 as it relates to the challenges facing maritime transport infrastructure and the key interventions that it identifies requires urgent attention in order to be on target to meet the 2030 deliverables of Operation Phakisa in the ocean economy.

The Maritime Sector in South Africa is still developing the necessary instruments to expand and play an active role in South Africa's rapid developmental agenda. There exists scope to revive the maritime sector and enhance its contribution to the growth and transformation of the South African economy. Promotion and development of the sector is within the context of the mandate of the Coega SEZ.

The Coega SEZ has been exploring economic opportunities in the maritime industry for several years, with the intention to exploit the CDC's organisational strength and Coega SEZ's close proximity to a deep-water port and to contribute to the growth of maritime economy in the region. The growth of the Maritime industry in the Province will diversify the economy of this region and contribute to the much needed economic growth, maritime skills development and local jobs, if managed correctly.



SMALL BUSINESS FINANCE & SUPPORT (SBFS)

The CDC identified access to bridging finance as one of the main challenges faced by its SMMEs. This is due to a huge gap that exists in the SMME lending market, which is now being addressed by the CDC by investing its collective experience to fill this gap, thereby unlocking funding in a more efficient and effective manner. The establishment of the SBFS under CDC provides a unique opportunity for a pioneering financial institution that can be the model financial institution for the SMME market. The SBFS is spearheaded by a team of highly experienced and seasoned individuals with 50 years collective on the ground experience in the SMME lending space.



<http://www.sbfefinance.co.za/>



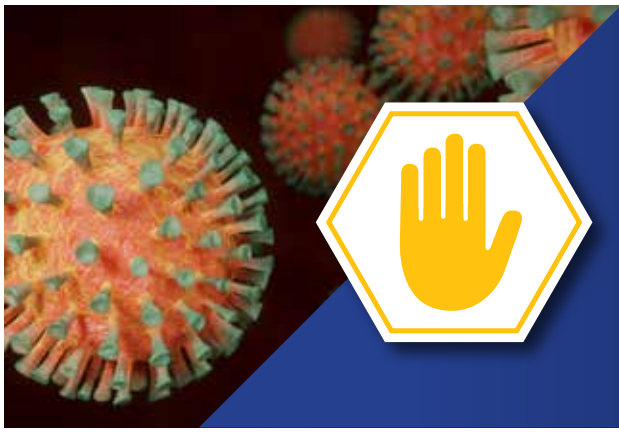
COEGA AFRICA PROGRAMME (CAP)

Regional integration is a development priority for Africa. This is in line with continental objectives and strategies set out by the African Union (AU) Agenda 2063, and other continental, developmental and trade agreements which promote intra-African trade, providing unending opportunities for South African businesses going forward.

It is against this backdrop that the CDC is intensifying its business outreach efforts outside the borders of South Africa. With capabilities in Engineering, Procurement, Project Management, Construction and Facilities Management, the CDC is committed to be the leading catalyst for economic development in South Africa and the broader African regional developmental agenda and economic imperatives.



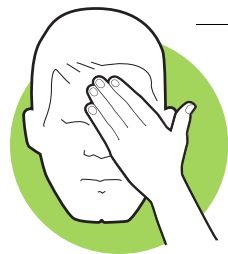
The Global recognition and awareness are also critical for the newly established Coega Africa Programme. Other effective channels are currently being explored to further strengthen global brand awareness.



STOP COVID-19 OUTBREAK

There are general precautions you can take to prevent the spread of viral respiratory infections.

Wash your hands frequently with soap and water or alcohol-based hand sanitizer, lather for at least **20 seconds**



Avoid touching your eyes, nose and mouth with unwashed hands

Avoid close, unprotected contact with anyone with respiratory symptoms

Stay healthy: eat a balanced diet, get rest, avoid stress



Where to find information on the Coronavirus in South Africa

National Institute of Communicable Disease
Toll Free: 0800 029 999
Hotline: 082 883 9920 • Website: www.nicd.ac.za

Cover your mouth and nose with a tissue or your sleeve (not your hands) when coughing or sneezing



Clean and disinfect frequently touched objects and surfaces with **isopropyl alcohol**

Complaints Management

Help us change your bad experience into a positive encounter

DO YOU BELIEVE IN FAIR TREATMENT/ ETHICAL AND TRANSPARENT BUSINESS PRACTICES/ RESOLVING PROBLEMS AMICABLY? For effective and efficient resolution of your complaint, please contact the CDC Complaints Management office on:

Call Centre: +27 (0)86 000 4278 | Mobile: +27 (0)73 443 5195 | Fax: +27 (0)41 403 0401 | Email: complaints@coega.co.za
Postal Address: Complaints Management Office, Coega Development Corporation, Private bag X6009, Port Elizabeth, 6000

Tip-Off Anonymous

BLOW THE WHISTLE ON FRAUD / CORRUPTION / THEFT / BLACKMAIL / BRIBERY / INTIMIDATION / OTHER UNETHICAL BEHAVIOR.

Call Toll-free TODAY: 0800 007 035 and remain anonymous.

KPMG Hotfax: 0800 200 796 | KPMG Hotmail: hotline@kpmg.co.za | KPMG Webmail: www.thornhill.co.za/kpmgfaircallreport
Postal Address: BNT 371, P.O Box 14671, Sinoville, 0129

The KPMG Ethics Line service allows all stakeholders to report concerns of misconduct.



right PLACE • right TIME • right CHOICE

PORT ELIZABETH HEAD OFFICE:

Physical Address:

Coega Development Corporation, Coega SEZ Business Centre,
Corner Alcyon Road & Zibuko Street, Zone 1, Coega SEZ, Port Elizabeth, 6100
Tel: +27 (0)41 403 0400

EAST LONDON OFFICE:

Physical Address:

Harraway House, 12 Pearce Street, Berea, East London, 5241
Tel: +27 (0)43 711 1600

DURBAN OFFICE:

Physical Address:

18 Cranbrook Crescent, Umhlanga, 4051
Tel: +27 (0)31 584 1760

PRETORIA OFFICE:

Physical Address:

145 Herbert Road, East Wood, Arcadia, Pretoria, 0083
Tel: +27 (0)12 451 8300

CAPE TOWN OFFICE:

Physical Address:

1101, 11th Floor, South African Reserve Building, Cape Town, 8001
Tel: +27 (0)21 481 9960

MTHATHA OFFICE:

Physical Address:

24 Park Road, Mthatha, 5099
Tel: +27 (0)47 531 1246



■ right **PLACE** ■ right **TIME** ■ right **CHOICE**

E-mail: contact.centre@coega.co.za | Website: www.coega.co.za

COEGA SEZ - THE PREFERRED INVESTMENT DESTINATION IN AFRICA AND A GATEWAY TO WORLD MARKETS

EXPERIENCE AND EXPERTISE IN PROVIDING SOLUTIONS ON THE AFRICAN CONTINENT



BAIC SA



VECTOR LOGISTICS



NATIONAL SHIP CHANDLERS



FAMOUS BRANDS



DIGISTICS



PE COLD STORAGE



ISUZU



APM TERMINALS



THE COURIER GUY



LACTALIS SA



MSC SEZ



ABSOLUTE WIND



ALE



HELLA



FAW



CFR/ZACKPACK LOGISTICS



CORRO MASTER



AFROX



AIR PRODUCTS



DAIRY GROUP



DAIRY GROUP WAREHOUSE 1



DAIRY GROUP WAREHOUSE 2



DYNAMIC COMMODITIES



OLM ENGINEERING



HIMOINSA



MZANTSIS CS FOOD



CHEMCHAMP



TRANSMERCH AFRICA



DISCOVERY



CEMZA



WNS



SANITECH



BOSUN BRICKS



KENAKO CONCRETE



GOEGA STEELS



CEREBOS



CEREBOS WAREHOUSE 1



CEREBOS WAREHOUSE 2



DEDISA



ELECTRAWINDS



GRUPO ANTOLIN



BENTELER



FAURECIA



SCHNELLECKE



QPLAS



REHAU



ITPSA



MICB



MSC SA



DHL

LOCATE YOUR BUSINESS IN THE COEGA SEZ, A LEADING SEZ IN AFRICA



right PLACE • right TIME • right CHOICE